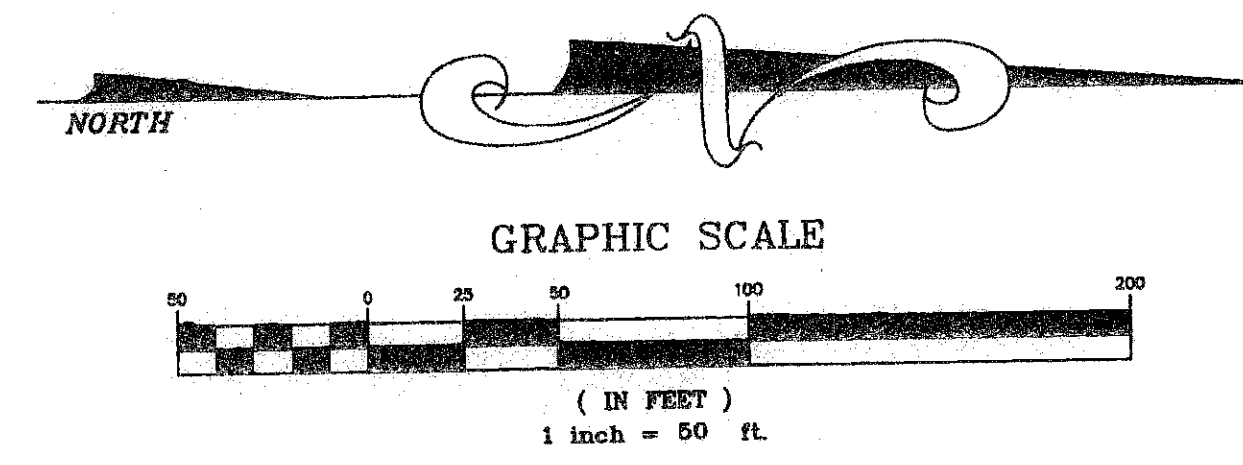
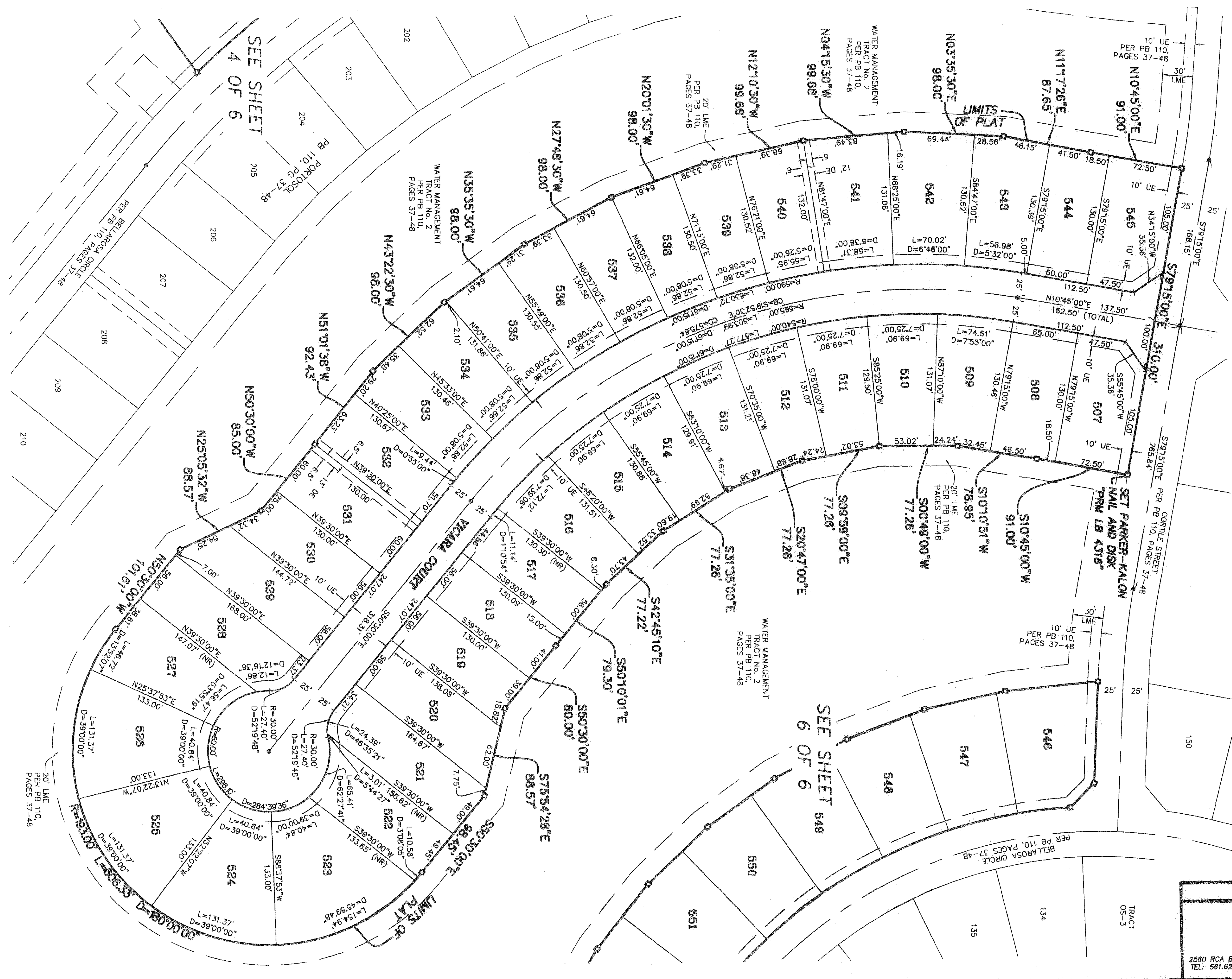
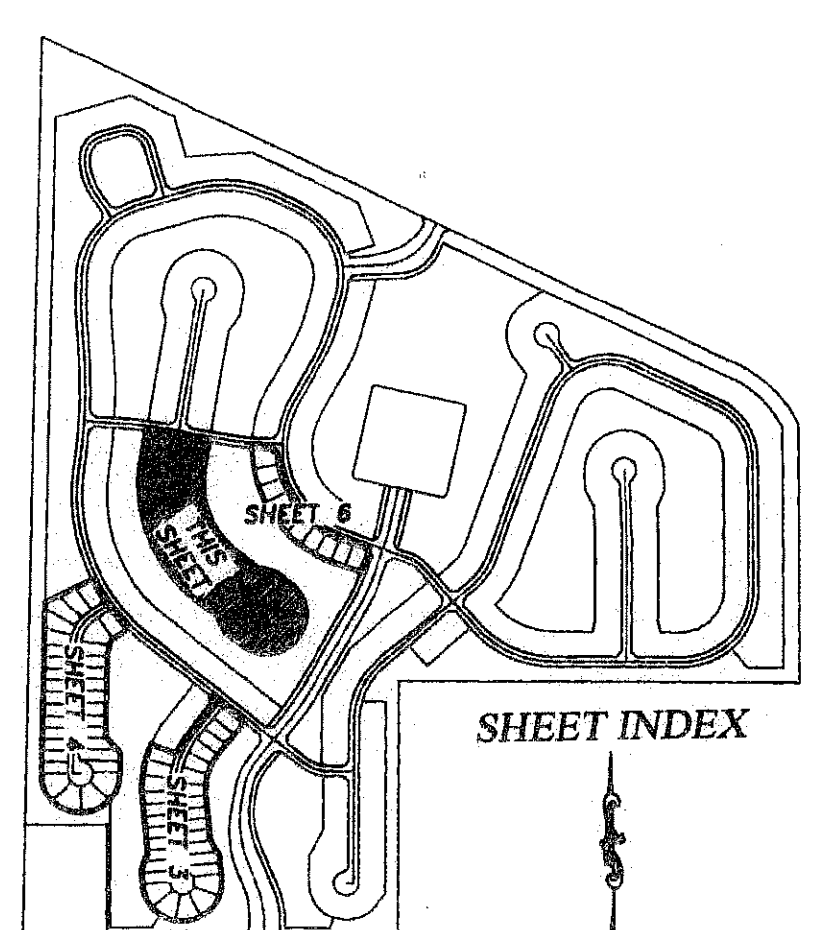


**PORTOSOL REPLAT NO. 1**  
 IN SECTION 24, TOWNSHIP 43 SOUTH, RANGE 41 EAST,  
 VILLAGE OF ROYAL PALM BEACH, PALM BEACH COUNTY, FLORIDA  
 BEING A REPLAT OF A PORTION OF PORTOSOL, AS RECORDED IN  
 PLAT BOOK 110, PAGES 37 THROUGH 48, OF THE PUBLIC RECORDS OF  
 PALM BEACH COUNTY, FLORIDA  
 JUNE 2009  
 SHEET 5 OF 6



- LEGEND:**
- D= DELTA (CENTRAL ANGLE)
  - L= LENGTH
  - R= RADIUS
  - CB= CHORD BEARING
  - CD= CHORD DISTANCE
  - PSM= PROFESSIONAL SURVEYOR AND MAPPER
  - PLS= PROFESSIONAL LAND SURVEYOR
  - LAE= LIMITED ACCESS EASEMENT
  - LME= LAKE MAINTENANCE EASEMENT
  - MREE= MAINTENANCE ROOF AND EAVES EASEMENT
  - UE= UTILITY EASEMENT
  - DE= DRAINAGE EASEMENT
  - OS= OPEN SPACE
  - WMT= WATER MANAGEMENT TRACT
  - (R)= RADIAL
  - (NR)= NON-RADIAL
  - PB= PLAT BOOK
  - ORB= OFFICIAL RECORD BOOK
  - PG= PAGE
  - P.B.C.U.E.= PALM BEACH COUNTY UTILITY EASEMENT
  - = PERMANENT REFERENCE MONUMENT
  - 4"x4" CONCRETE MONUMENT WITH ALUMINUM DISK "PRM LB 4318" (UNLESS OTHERWISE NOTED)
  - = PERMANENT CONTROL POINT
  - = PARKER-KALON NAIL & DISK "PCP LB 4318" (UNLESS OTHERWISE NOTED)



<b>PORTOSOL REPLAT NO. 1</b>	
	SHEET NO. 5 OF 6 SCALE: 1"=50' DATE: JUNE 2009 JOB NO. 1038.057 FILE: 1038.057 NO 1.DWG
2560 RCA BLVD, STE 105, PALM BEACH GARDENS, FL 33410 TEL: 561.627.5200 FAX: 561.627.0983 www.globalmind.com D.B.P.R. BUSINESS LICENSE No. 4318	